

# Kidwells Close

Maidenhead • • SL6 8FZ

Guide Price: £320,000



coopers  
est 1986



# Kidwells Close

Maidenhead • • SL6 8FZ

\* NO ONWARD CHAIN \*

A stunning three-bedroom apartment located  
in Maidenhead town centre.

Top floor apartment

Immaculately presented

Central location

Underground parking space

Spacious open plan living/dining area

En-suite to master bedroom

Amenities close by

Communal gardens

Phone entry system

Speak to agents about parking

These particulars are intended as a guide and must not be relied  
upon as statements of fact. Your attention is drawn to the  
Important Notice on the last page.







### Property

An immaculate apartment located in Maidenhead Town centre. This top floor apartment offers a spacious open plan living/dining area, three-bedrooms, a modern fitted bathroom and en-suite to master bedroom.

### Outside

This exclusive apartment offers communal grounds, a phone entry system and a underground parking space.

### Location

This stunning apartment offers easy access to Maidenhead Town Centre, Maidenhead train station, a number of amenities including local shops and schools. The A404/M4 and M25 are easily accessible.





### Schools:

St Luke's CofE Primary School 0.2 miles  
Riverside Primary School and Nursery 0.3 miles



### Train:

Maidenhead Station 0.4 miles  
Furze Platt Station 0.6 miles  
Taplow Station 1.8 miles



### Car:

M4, A40, M25, M40



### Council Tax Band:

D

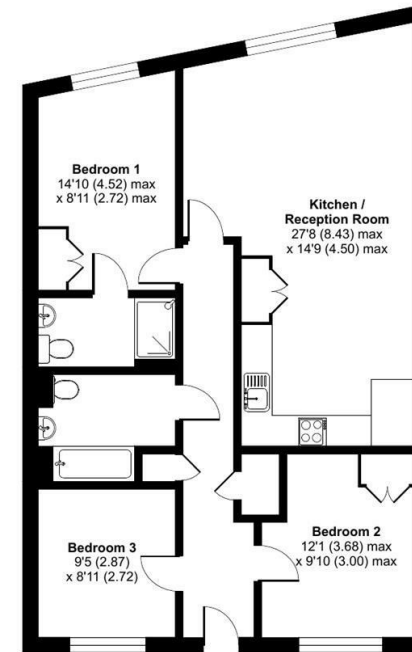
(Distances are straight line measurements from centre of postcode)



## Kidwells Close, Maidenhead, SL6

Approximate Area = 930 sq ft / 86.3 sq m

For identification only - Not to scale



FOURTH FLOOR



Floor plan produced in accordance with RICS Property Measurement Standards incorporating International Property Measurement Standards (IPMS2 Residential). © nrichcom 2023. Produced for Coopers. REF: 1030001

**coopers**  
est 1986

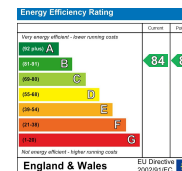
**coopers**  
est 1986

01628 232 550

42 Queen Street, Maidenhead,  
, SL6 1HZ

maidenhead@coopersresidential.co.uk

**CoopersResidential.co.uk**



Important Notice: These particulars, whilst believed to be accurate are set out as a general outline only for guidance and do not constitute any part of an offer or contract. Intending purchasers should not rely on them as statements or representation of fact, but must satisfy themselves by inspection or otherwise has the authority to make or give any representation or warranty in respect of the property.